

Customer :

customer

Customer part :

customer part

Comment :

Comment

S1=2.31

S2=2.88

Tmax=454

Tp S2=493.0

PI=0.44

HI=119

Sample =1638.10

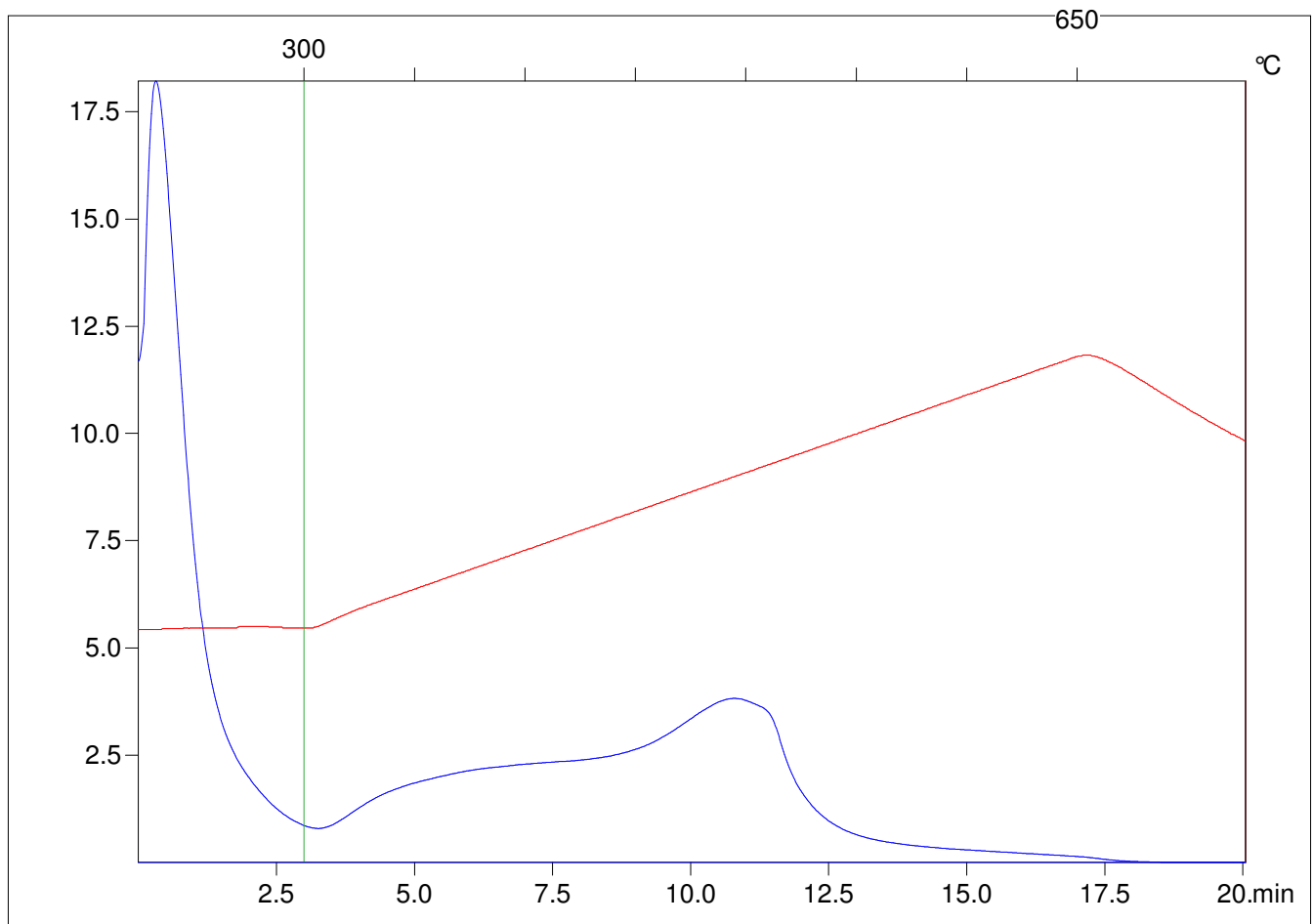
Method =Bulk Rock

Cycle=Basic

KFID(10\*9)=1444

Qty =70.8

TOC=2.42



C:\VINC\PK1792\PK037.R00 : FID pyrolysis graphic

State

Pyro Status

Oxi Status